

THE LIBRARY

April 1998

Including 1998/99 budget vote information

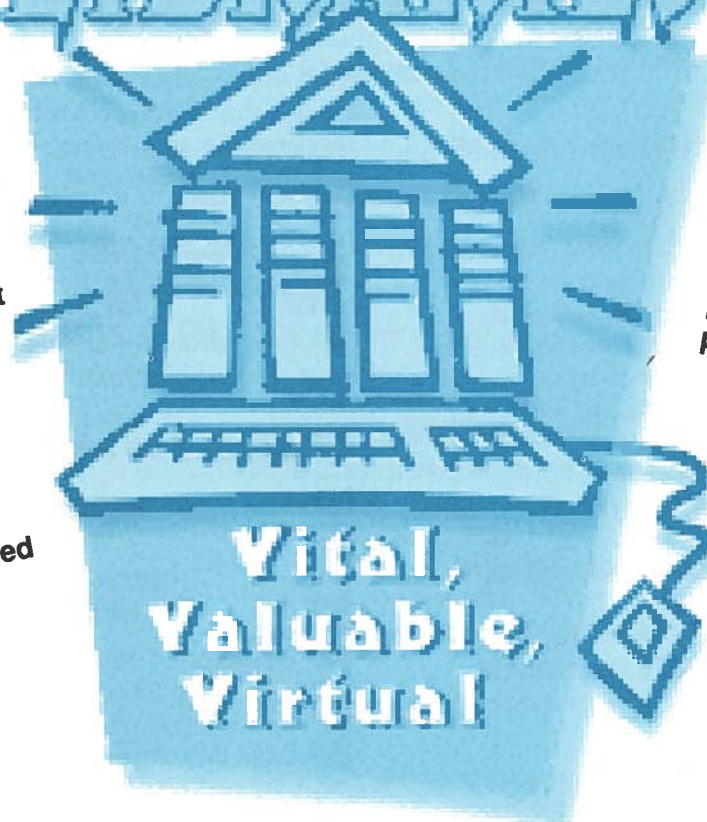
more than **1,981** new patrons obtained library cards since the new East Northport library opened, with **2,173** overall new cards for the year

5,156 items were interlibrary loaned for patrons

1,840 patrons have applied for and received free access to the Internet through SuffolkNet, the library's Netwalk connection

our programs entertained and educated
3,456 adults
528 young adults
8,442 children

PUBLIC LIBRARIES



90% of the people in the community have library cards

178,432 visits were made by patrons to the new library since it opened;
401,760 visits to the library were made during the last year

the library owns
146,467 adult books
75,454 books for children
14,055 audio visual materials
6,194 newspapers, periodicals and pamphlets

patrons checked out **458,897** items

88,566 reference questions were answered;
14,364 from children and
74,202 from adults

*Reference & Information Services • Children's Services • Young Adult Services
Online Public Access Catalog • Central Circulation • SelfCheck Stations • Interlibrary Loan
Preschoolers' Door to Learning • Computer Services and Internet Access • Media Collection
Prime Time Services for Seniors • Homeward Bound Books • Quiet Study & Tutorial Rooms
Programs, Workshops & Lectures • Bus Trips • Community Meeting Rooms
Exhibits & Displays • Community Bulletin Boards • The Library Newsletter
The Library Cafe • Tours and Guided Assistance • Friends of the Library
Vital, Valuable, Virtual . . . the library is your place.*

— For Adults —

FIRESIDE FRIDAYS

Join us around the fireplace at the East Northport Library for three special events. Limited seating is available. Tickets for our fireside programs are available at the library beginning April 1.

POETS NIGHT & OPEN READING

Friday, April 3, 7:30 p.m.

Celebrate National Poetry Month as Jean Stainback hosts an evening of reading, featuring poet Kate Kelly. You are also invited to share your own verse. Please call the library to sign up for an open reading time.

SONGS & STORIES FOR THE EARTH AND ANIMALS

Friday, April 17, 7:30 p.m.

Celebrate the Earth! Award-winning singer/songwriter Sue Stater and storyteller Nick Cockinos take us back to our deepest feelings for nature, through song and story, to a time when we were one with everything living.

WINDSTRUM: FLUTE & GUITAR

Friday, April 24, 7:30 p.m.

Enjoy an evening of music with Windstrum, featuring flutist Heather Holden and classical guitarist Bradley Colten. Ms. Holden, a native of Northport and graduate of the Manhattan School of Music, was a 1997 winner of the Artist International Carnegie Hall Debut Series and made her debut at Carnegie Hall in March. As an ensemble, she and Mr. Colten have worked with leading musicians such as David Starobin and Linda Chesis, and have performed throughout New York and New England.



HIKING THE CATSKILLS

Wednesday, April 29, 7:30 p.m.

Lee McAllister, author of *Hiking the Catskills*, presents a spectacular slide show and talk focusing on the beautiful Catskill trails. Mr. McAllister is an avid outdoorsman, photographer, and naturalist who has led guided hikes in the Catskills and on Long Island. All are welcome.

LYME DISEASE SELF-HELP COURSE

Thursdays, April 16, 23, 30, May 7, 14 & 21

10:00 a.m. - 12:00 noon

In this six-part course, sponsored by the Long Island Chapter of the Arthritis Foundation, Lyme Disease Educator Judi Hason will provide information on treatment options and the latest in Lyme Disease research. Please call the Arthritis Foundation at 427-8272 to register.

BOWS, BOWS, BOWS

Thursday, April 9, 7:30 p.m.

Instructor Helen Ensmenger will teach you to make florist bows, gift bows, bannister bows, basket bows and tiny bows for special decoration. A \$12.00 materials fee is payable at registration, which begins April 1.



Tuesdays, April 28 & May 5, 7:00-10:00 p.m. Fee: \$30

Applications for this six-hour course may be picked up at the East Northport Library beginning April 1.

BOOK-A-TRIP
to
Lancaster, Pennsylvania
Saturday, May 30, 1998

Departure: 7:30 a.m. from the Laurel Ave. School parking lot (across from Northport Library)
Return: 9:30 p.m.

Cost: \$49.00 per person (checks only; payable to Northport Public Library; non-refundable)
Itinerary: Our day in beautiful Lancaster begins with a visit to the Kitchen Kettle Village where you can browse the many shops and purchase lunch on your own. Afterward, a local guide will provide a narrated tour of the Amish countryside. Top off the day with dinner at the famous Miller's Smorgasbord.

Register in person (limit 2 on first day of ticket sale) at the East Northport Library beginning April 11.

HEALTH INSURANCE INFORMATION, COUNSELING & ASSISTANCE PROGRAM

For Seniors Only

Thursday, April 9, 1:00-4:00 p.m.

Friday, April 24, 9:15 a.m. -12:15 p.m.

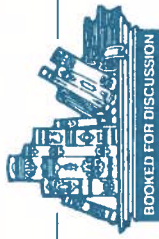
HIICAP-trained counselors answer questions about Medicare, HMOs, and supplementary health insurance. Call 261-2313 to make an appointment in East Northport.

55/ALIVE MATURE DRIVER PROGRAM

Wednesdays, May 6 & 13, 7:00-11:00 p.m. or

Wednesdays, May 20 & 27, 7:00-11:00 p.m.

AARP's two-part course is open to anyone 50 years of age or older. Registration begins Saturday, April 18. There is an \$8 fee, payable to AARP by check or money order only. To facilitate registration, please bring your library card.



NOVEL IDEAS

Friday, April 17, 1:00 p.m.
Monday, April 20, 7:00 p.m.

Our discussion this month will focus on *The Other Side of the River: A Story of Two Towns, A Death, and America's Dilemma*, a novel based on a true incident. A segment from the CBS "Sunday Morning" show will be shown, including an interview with the author, Alex Kotlowitz. To join this group call our discussion leader, Librarian Dodie Gillman, at 261-2313.

BOOK & SANDWICH (WRAP)

Thursday, April 2, 1:00 p.m.
Tuesday, April 7, 7:00 p.m.

This month's short stories are from *The Family Markowitz* by Allegra Goodman. We'll discuss "Fannie Mae," "The Wedding of Henry Markowitz," and "Fantasy Rose." To join us, call our discussion leader, Librarian Michelle Epstein, at 261-2313.

STRATEGIES FOR FINANCIAL FITNESS

Monday, April 20, 7:30 p.m.

Dana Sydney of The Equitable will help you assess your financial fitness and discuss ways to locate and increase discretionary income, plan for adequate protection in case of emergencies, invest in finance college education, and more. All are welcome.



— For Young Adults —



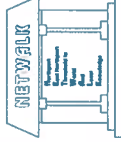
CARRY THE CARD . . . IT'S POWERFUL!

Your Northport-East Northport library card, that is. It's your ticket to computer access at the public library. From middle school through age 17, we offer Internet Access and an Applications Computer for your use in the YA Corner. You will need a parent or guardian to give their permission for Internet access by signing an agreement form at the library . . . you will sign as well. The YA Internet Computer offers you links to valuable resources for class assignments. The Applications Computer offers you word processing, encyclopedias and more. BUT, remember that library card. Don't have a library card? Stop at the Circulation Center, bring identification, and you're on your way.

Computer Assisted Student Tutorial Learning Environment . . . that's CASTLE for short!

The YA Applications Computer is loaded with all the CASTLE programs. These easy to use programs, developed by experienced teachers, let you access questions and vocabulary using a vast database. You'll have access to these CASTLE programs: Global Studies, U.S. History & Government, Economics, AP European History, AP United States History, Earth Science, Biology, Chemistry, and Physics. Don't forget your library card!

Log on @ the Library — NETWALK@suffolk.lib.ny.us



Come to the library and apply for your free NETWALK Internet account. The next meeting of the NETWALK Internet User Group is Tuesday, April 14 at 7:30 p.m.

Northport-East Northport Public Library

Calendar of Events



April 1998

All programs will be held at the East Northport Library.

Display Case Exhibit
"Global Reach, Local Touch,"
Celebrating National Library Week



East Northport Floral Decorations
Irene Ackerman of the Larkfield
Community Garden Club

Sunday	Monday	Tuesday	Wednesday	Thursday	Friday	Saturday
5	6	7	8	9	10	11
<p>April 20 is "Check It Out Yourself Day at the Library"</p> <p>When you visit the library on April 20 "Check It Out Yourself" on the library's SelfCheck System!</p> <p>In honor of National Library Week, 3M Library Systems is sponsoring its 2nd annual "Check It Out Yourself Day at the Library." Based on the number of items counted by the SelfCheck that day, our library may be eligible to receive an award of \$1,000 for our acquisitions fund.</p> 	<p>Library Budget Vote 9 am - 9 pm at the East Northport Library</p> <p>*Book & Sandwich (W)rap 7 pm Kids . . . Cast Your Vote! 10 am - 8 pm (followed by Cast Your Vote party, 8 pm)</p>	<p>Registration begins for Bows, Bows, on 4/9 Applications available for Defensive Driving, on 4/28 & 5/5 Tickets available for Fireside Friday programs on 4/3, 4/17 & 4/24 Free Blood Pressure Check 1-3 pm *Defensive Driving 7 pm</p>	<p>Registration begins for Music & Movement and Story Parade, on 4/24</p>	<p>AARP Tax-Aide Program 9 am - 1 pm *For Fours 9:30 am & 10:30 am *New Mothers Discussion Group 10 am *Book & Sandwich (W)rap 1 pm *YA S.A.T. Preparation Program 6-9 pm</p>	<p>Young Adult Book Reviewers 4-5 pm Knitters' Circle 7 pm Volunteer Income Tax Assistance 7-9 pm *Fireside Friday: Poets Night 7:30 pm</p>	<p>Registration begins for Preschoolers' Door To Learning</p>
12	13	14	15	16	17	18
		<p>Netwalk Internet User Group 7:30 pm</p>		<p>*Lyme Disease Self-Help Course 10 am - 12 noon</p>	<p>*Novel Ideas 1 pm *Story Parade 4 pm Knitters' Circle 7 pm *Fireside Friday: Songs & Stories for the Earth and Animals 7:30 pm</p>	<p>Registration begins for 55/Alive Mature Driver Programs on 5/6 & 5/13 and 5/20 & 5/27</p>
19	20	21	22	23	24	25
<p>National Library Week April 19-25</p>	<p>"Check It Out Yourself Day at the Library" *Tales For Two 9:30 am & 10:30 am *For Fours 1 pm & 2 pm *Novel Ideas 7 pm Concerned Consumer: Strategies for Financial Fitness 7:30 pm</p>	<p>*For Fours 9:30 am & 10:30 am Oral History Project 7:30 pm Friends of the Library 7:30 pm</p>	<p>*Laptime 9:30 am & 10:30 am *On My Own 1 pm & 2 pm</p>	<p>*On My Own 9:30 am & 10:30 am *Lyme Disease Self-Help Course 10 am - 12 noon *Tales For Two 1 pm & 2 pm Library Board of Trustees Meeting *YA S.A.T. Preparation Program 6-9 pm</p>	<p>*Health Insurance Information, Counseling & Assistance Program 9:15 am - 12:15 pm by appt. *Music & Movement 10 am *Story Parade 4 pm Knitters' Circle 7 pm *Fireside Friday: Windstrum 7:30 pm</p>	<p>*Mother Goose 9:30 am</p>
26	27	28	29	30		
	<p>*Tales For Two 9:30 am & 10:30 am *For Fours 1 pm & 2 pm</p>	<p>*For Fours 9:30 am & 10:30 am Defensive Driving 7 pm</p>	<p>*Laptime 9:30 am & 10:30 am *On My Own 1 pm & 2 pm Hiking the Catskills 7:30 pm</p>	<p>*On My Own 9:30 am & 10:30 am *Lyme Disease Self-Help Course 10 am - 12 noon *Tales For Two 1 pm & 2 pm *YA S.A.T. Preparation Program 6-9 pm Development of Speech & Language in Preschool Children 7:30 pm</p>		

Note: Italic type indicates Children's Programs.
Enrollment in our programs is limited, with preference given to district residents. Tickets limited to 2 per patron on the first day of registration. The Northport-East Northport Public Library encourages all residents to participate in program activities. Please let us know in advance if you require any special accommodations because of a disability.

*Pre-registration or tickets required for this program. Occupancy of our meeting room is limited.

Kids ... Cast Your Vote!

for your favorite "international" book!

Tuesday, April 7 at the East Northport Library
10:00 a.m. - 8:00 p.m. Ages 3-up

When your parents come to vote on Tuesday, April 7th, you will also have the opportunity to vote using a real voting machine* in the Children's Room.



*Voting machine courtesy of Election Machine Service Company.

Picture books:



Mama Do You Love Me (Inuit)

Mr. Gumpy's Outing (England)

Madeline (France) Napping House (USA)

Tikki, Tikki Tembo (China)



Pick one from each category

Fiction:



Pippi Longstocking (Sweden)

Mary Poppins (England)

Pinocchio (Italy) Ramona (USA)

Heidi (Switzerland)



The "candidates" are on display in the exhibit case in the library gallery.

The vote will be tallied at 8:00 p.m. Join us for a victory celebration with refreshments.



— For Children —

Registration for our next series of **PRE SCHOOLERS' DOOR TO LEARNING** will be held on Saturday, April 4. Pick up a brochure with full program descriptions at the library. The following programs are offered:

LAPTIME

for children 12-18 months with a parent/caregiver

MOTHER GOOSE

for children 18-24 months with a parent/caregiver

PARENT/CHILD WORKSHOP

2¹/₂ year olds with a parent/caregiver

TALES FOR TWO

2¹/₂-3¹/₂ year olds with a parent/caregiver

ON MY OWN — 3 year olds

FOR FOURS — 4 year olds

April Preschool Special: MUSIC & MOVEMENT

Friday, April 24, 10:00 a.m.
Children ages 18-36 months
with parent/caregiver

Terry Heins, a certified music teacher, will lead you and your child in music and dance. Register beginning April 8.

DEVELOPMENT OF SPEECH & LANGUAGE IN PRESCHOOL CHILDREN

Thursday, April 30, 7:30 p.m.

Do you have questions about your three or four year old's speech and language development? Come to an informative talk on preschool communication development given by Nancy Crawford Sutcliffe, M.S., a Speech-Language Pathologist. Normal development of language, articulation, and fluency as well as when and how to get help will be discussed. Your questions are welcome.

The Bookmark Spot

Stop by the library and pick up April's bookmark by Matthew Powers. A special reading list, compiled by our children's librarians, is on the back.



Matilda says
Be on top
of the world
READ A BOOK

Matthew Powers

To Our Community Residents,

The library is on the move again! Construction on the new Northport Library is rapidly nearing completion and the staff is preparing to make the building patron-ready. Within the next month, the administrative and technical services presently operating from our temporary storefront will begin relocation back to Northport. Computer staff will then assemble and network a host of computer systems. Furniture will arrive in the late spring and shortly thereafter our many collections will be removed from storage, brought back into the building, and reorganized on the shelves. An accessible, spacious, contemporary and dynamic new Northport Library awaits your first visit this coming June. And, if you are one of the thousands of patrons who have visited the new East Northport Library, I hope you share our tremendous pride in this beautiful library.

When the new fiscal year begins on July 1, our library will be serving the community from its two brand new facilities. Through the leadership of the Library Board and

the support of the community, we have built a solid foundation for public service into the next century. This budget ensures the best use of all of our intellectual resources and material resources regardless of their location.

Our two beautiful buildings balance a strong technological infrastructure with the cherished traditional components of library services expected to continue well into the years to come. After a decade of discussion and decision-making, the direction of our efforts to rebuild our neighborhood libraries is now a wonderful reality.

Rarely in life do you have the privilege of working with a group of individuals who are both visionaries and doers. As I begin my second decade as Director of the Northport-East Northport Public Library I would like to express my deep appreciation to the the Board of Trustees and the community for the high value they place on their library.

Stephanie Heineman
Library Director

MEET THE CANDIDATES For Library Trustee

THELMA D. JACKSON

Q. How long have you been a resident of the Northport-East Northport community?

A. I have been a resident of this community for one year.

Q. In what community groups are you (or have you been) an active participant?

A. I have been an active participant of the Hempstead Historical Society. I also served as President of the Ingham Estate Civic Assoc. I worked with county and local officials to implement Senior Citizen and safe neighborhood programs. I was a secretary for the Hempstead/Westbury NAACP.

Q. Why do you want to be a Library Trustee?

A. Good library service is an asset in every community. My candidacy for the office of Trustee offers my commitment, experience, and brings creative ideas to the table. My support will provide continued quality library services to the community.

Q. What is the most important contribution you could make to the library?

A. I am a detail-oriented person with a wealth of experience in community service. I believe that my civic commitment, years of experience, business background, and organizational skills bring added value to the board.

ELIZABETH A. McGRAIL

Q. How long have you been a resident of the Northport-East Northport community?

A. 35 years

Q. In what community groups are you (or have you been) an active participant?

A. In addition to currently serving as a Trustee on the Library Board, I am also active in Trinity Episcopal Church; The Place (Northport-East Northport Guidance Council); Girl Scout Leaders; Boy Scouts T-52; Order of Eastern Star & Constellation (Youth Division); PTA (past president); AARP-Northwestern Suffolk Chapter; and AARP-Health Advisory Speaker.

Q. Why do you want to be a Library Trustee?

A. For 35 years the library has provided a sound resource base for my family and me. Now that our planned expansion of the library is accomplished, I would like to continue serving the community as a Trustee, assuring that our resources meet the needs and desires of the community.

Q. What is the most important contribution you could make to the library?

A. As a representative of our total Northport-East Northport community, I pledge that my decisions on our library's future will be determined by the consensus of its citizens.

WILLIAM H. STRINGER

Q. How long have you been a resident of the Northport-East Northport community?

A. I have resided in Northport-East Northport all of my 42 years.

Q. In what community groups are you (or have you been) an active participant?

A. I'm active in SOS Fish, as founder. b. I'm active in, 20's & 30's, a singles group. c. I'm forming, transitional singles.

Q. Why do you want to be a Library Trustee?

A. I have a knack for getting value for money in the form of goods and services. I feel I can do the people of this community good by directing tax dollars for the library in more meaningful ways than past and present trustee has accomplished.

Q. What is the most important contribution you could make to the library?

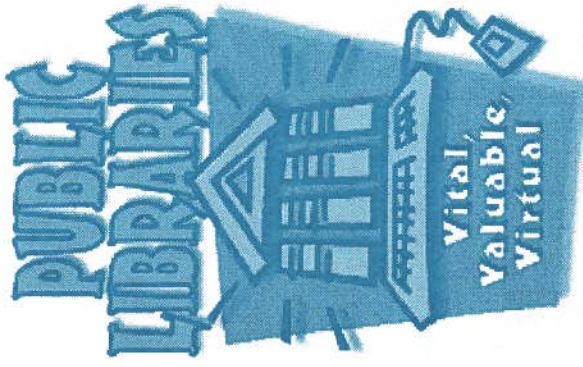
A. I would use all of my power and influence to keep the libraries open during weekend evening hours.

the support of the community, we have built a solid foundation for public service into the next century. This budget ensures the best use of all of our intellectual resources and material resources regardless of their location.

Our two beautiful buildings balance a strong technological infrastructure with the cherished traditional components of library services expected to continue well into the years to come. After a decade of discussion and decision-making, the direction of our efforts to rebuild our neighborhood libraries is now a wonderful reality.

Rarely in life do you have the privilege of working with a group of individuals who are both visionaries and doers. As I begin my second decade as Director of the Northport-East Northport Public Library I would like to express my deep appreciation to the the Board of Trustees and the community for the high value they place on their library.

Stephanie Heineman
Library Director



Annual Library Vote

**Tuesday, April 7, 1998
9:00 a.m. to 9:00 p.m.**

Voting will be for two purposes: to vote on the annual operating budget for the next fiscal year and to elect a trustee.

Vote will take place at the

**East Northport Public Library
185 Larkfield Road, East Northport**

YOU MAY VOTE in the library election if:

1. You are at least 18 years of age;
2. You are a citizen of the United States;
3. You have been a resident of the Northport-East Northport School District for at least 30 days;
4. You are registered to vote. (You are registered if you have voted within the last four years, in a general, school or library election.)

Northport-East Northport Public Library Your Community Library Proposed Operating Budget 1998/1999

APPROVED PROPOSED
BUDGET BUDGET
1997/98 1998/99

LIBRARY MATERIALS & PROGRAMS

Books & Periodicals	342,400	354,800
Video Cassettes, CDs & Books on Tape	56,300	68,000
Adult, Young Adult & Children's Programming	55,900	68,000

LIBRARY OPERATIONS

Equipment	7,000	28,600
Computer Hardware & Software	81,200	88,200
On-Line Public Access Catalog	89,400	84,700
Bookbinding	3,000	3,000
Office & Library Supplies	45,200	52,200
Telecommunications	25,000	33,600
Postage & Freight	28,500	28,500
Publications & Printing	45,000	53,000
Conference & Travel	10,000	12,000
Circulation Control	5,000	9,000
Professional Fees	36,600	42,000
SCLS Plan of Service Participation	23,800	25,500

LIBRARY BUILDINGS & MAINTENANCE

Fuels & Utilities	60,800	101,600
Maintenance Supplies	14,600	18,000
Repairs to Buildings & Grounds	0	10,000
Insurance	69,500	72,000
Building & Equipment Service Contracts	89,800	126,500

LIBRARY STAFF

Professional	1,224,300	1,420,300
Clerical & Library Pages	1,063,100	1,164,400
Custodial & Security Service	167,500	222,000
Sunday & Holiday Service	113,700	146,200

EMPLOYEE & MANDATED BENEFITS

Retirement, Social Security	307,000	279,900
Disability, Group Life & Unemployment Insurance	18,300	19,800
Health Insurance	164,000	180,100

DEBT SERVICE - PRINCIPAL & INTEREST

	730,500	685,065
	4,877,200	5,396,965

ANTICIPATED REVENUE

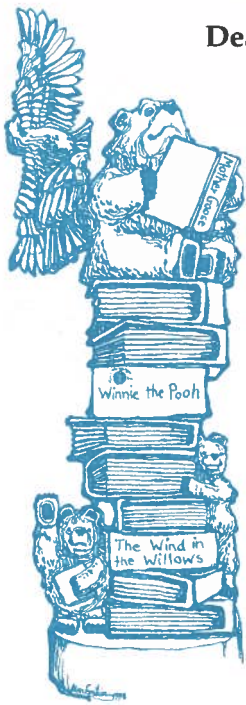
Fines, grants, self-supporting programs, etc.	89,000	93,090
To be raised by taxation	\$4,788,200	\$5,303,475
	\$4,877,200	\$5,396,565

TAX RATE HISTORY AND PROPOSAL ON THE OPERATING BUDGET

Actual	Proposed
1997/98	1998/99
\$4,788,200	\$5,303,475
\$80,084,433	\$80,156,508
\$5.98	\$6.62 (Est.)
0.28	0.64
4.9%	10.7%

The estimated increase in the tax rate is \$.64 per \$100 assessed valuation which, based on a \$4,000 assessment, amounts to \$25.60 for the year.

Dear Friends and Neighbors:



I have served on the Library Board for six years and have been close to all that has been accomplished in that time. This community's special commitment to the best in library service continues to inspire me.

The new East Northport Library is one of which the community can be justly proud. Public response has been overwhelming. Television and newspaper reports are laudatory. Comment after comment in our guest register compliment the building for its beauty and the staff for its service. Letters of thanks come week after week. Statements of appreciation are substantiated by facts, facts which verify an exceptional level of service.

- 2,000 new library cards issued since the doors opened at the East Northport Library
- 90% of our community have library cards
- 1,300 people visit the new library every day
- 1,800 patrons access the Internet free through the library
- 215,000 books in our collection
- 6,000 newspapers and magazines
- 450,000 items borrowed last year

Northport and East Northport can feel only pride in all of this and what it means. I believe our libraries make this a better place to live. I thank all those who make this possible: a library staff without equal; Stephanie Heineman and Eileen Minogue, our exceptional Director and Assistant Director, and the citizens of our community. With all of you, I look forward to that great day in June when the new Northport Library opens its doors.

Approval of our library budget for 1998/99 on April 7 will insure the continuation of quality services in our two new, beautiful libraries. The proposed 1998/99 library tax is \$22.80 a month per average household. What value, considering home delivery of Newsday costs \$35 a month and Family Cablevision \$29.95 a month.

Please vote on our budget on April 7. Of equal importance, please elect as a trustee the person you believe is most likely to continue our tradition of the best in library services, someone who will bring reason and good judgment to representing you at your library.

Thank you for your support and the opportunity to serve.

Sincerely yours,

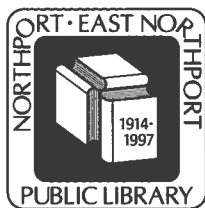
Michael L. Glennon

Michael L. Glennon

Chairperson, Library Board of Trustees

Tree sculpture by Frank & Donna Bono of Tree Art Gallery.
Drawing by Alan Epstein.

ACCESS TO YESTERDAY • HELP FOR TODAY • A PLAN FOR TOMORROW THE LIBRARY IS A GOOD PLACE TO START.



Northport-East Northport Public Library

151 Laurel Avenue
Northport, N.Y. 11768
(closed for renovation)
(516) 261-6930

185 Larkfield Road
East Northport, N.Y. 11731
(516) 261-2313

NETWALK@suffolk.lib.ny.us

April 1998

Including 1998/99 budget vote information

ECRSWS
POSTAL CUSTOMER
NORTHPORT, N.Y. 11768

Non Profit Organization
U.S. Postage Paid
Permit #6
Northport, N.Y.

LIBRARY TRUSTEES

Michael L. Glennon, Chairperson
C. Annette Carr
Stuart Goldblatt
Elizabeth McGrail
Ruth McKay

LIBRARY DIRECTOR: Stephanie Heineman
ASSISTANT DIRECTOR: Eileen Minogue

EDITORS: MaryEllen Moll, Nancy Morcerf

©1998 All rights reserved.
May not be reproduced without permission.

HOURS

9 to 9 Monday thru Friday
9 to 5 Saturday
1 to 5 Sunday

Preserve a forest . . .
borrow from your library.



PRINTED ON RECYCLED PAPER



A Monthly Guide to Your Library, Its Programs & Services